

# AFCAT

# STATIC GK

## SUPERSONIC SERIES

### PART-14



Q.1

The equator passes through

- a) Venezuela
- ~~b) Kenya~~
- c) Cameroon
- d) Costa Rica

भूमध्य रेखा गुजरती है

- a) वेनेजुएला
- b) केन्या
- c) कैमरून
- d) कोस्टा रिका

13 COUNTRIES  
ECB  
MIK  
Succuys

Q.2

Which city of Turkey is known as the 'Gateway to the West'?

- a) Gibraltar Strait
- b) Istanbul
- c) Suez Canal
- d) Ankara

तुर्की के कसि शहर को 'पश्चमि का प्रवेश द्वार' कहा जाता है?

- a) जब्रिल्टर जलडमरूमध्य
- b) इस्तांबुल
- c) स्वेज़ नहर
- d) अंकारा

BOSPORUS  
STRAIT

TURKEY  
TURKİYE  
ASIA MINOR  
GATEWAY OF EUROPE

Q.3

Which of the following countries of South Asia is the smallest in terms of area?

- ~~a) Bangladesh~~
- ~~b) Sri Lanka~~
- ~~c) Maldives~~
- d) Bhutan

दक्षिण एशिया का नमूनालिखित में से कौन सा देश क्षेत्रफल की दृष्टि से सबसे छोटा है?

- a) बांग्लादेश
- b) श्री लंका
- c) मालदीव
- d) भूटान

Q.4

The capital of the USA is situated on the bank of the river

- a) ~~Potomac River~~
- b) Mississippi River → BIRD FOOT DELTA
- c) Colorado River — GRAND CANYON
- d) Roe River — SHORTEST RIVER

संयुक्त राज्य अमेरिका की राजधानी नदी के तट पर स्थित है

- a) पोटोमैक नदी
- b) मसिसिप्पी नदी
- c) कोलारेडो नदी
- d) रो नदी

Q.5

The city of Rome is situated on the bank of river

- a) Po River — *CRADLE OF ITALY*  
b) Rhine River — *HIGHWAY OF EUROPE*  
c) Danube River — *10* — *4 CAPITAL*  
d) ✓ Tiber River

रोम शहर नदी के तट पर स्थित है

- a) पो नदी  
b) राइन नदी  
c) डानुबे नदी  
d) तबिर नदी

Q.6

The world's wettest continent is :

- a) South America
- b) North America
- c) Asia
- d) Europe

RAIN FOREST

PENINSULA OF PENINSULA

LAND OF BIRDS

KNDES

वर्श्व का सबसे आर्द्र महाद्वीप है:

- a) दक्षिण अमेरिका
- b) उत्तरी अमेरिका
- c) एशिया
- d) यूरोप



Q.7

Which one of the following pairs (Country and Capital) is not properly matched?

a) Spain – Madrid

b) Austria - Vienna

c) China - Peking (BEIJING)

d) New Zealand – Auckland

UN WTO (27 SEP 1974)

UNIDO | IAEA | OPEC

WORLDWIDE — SOUTHERN most

निम्नलिखित में से कौन सा युग्म (देश और राजधानी) सुमेलित नहीं है?

a) स्पेन - मैड्रिड

b) ऑस्ट्रिया - वियना

c) चीन - पेकिंग

d) न्यूजीलैंड - ऑकलैंड



Q.8

Which one of the following is not a correct match?

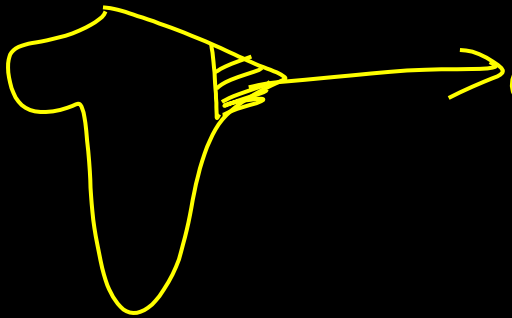
- a) Ukraine – Kiev — Dnieper River
- b) Ethiopia – Lusaka —
- c) Finland - Helsinki
- d) Bolivia - La Paz — Highest Capital in World

Hand  
of  
1000  
marks

निम्नलिखित में से कौन-सा एक सही मेल नहीं है?

- a) यूक्रेन - कीव
- b) इथियोपिया - लुसाका
- c) फ़िनलैंड - हेलसिंकी
- d) बोलीविया - ला पाज़

Q.9



‘Horn of Africa’ consists of

- a) Zimbabwe, Botswana and Angola
- ☒ b) Somalia, Ethiopia and Djibouti
- c) Algeria, Morocco and West Sahara
- d) Libya, Sudan and Egypt

‘हॉर्न ऑफ अफ्रीका’ में शामिल हैं

- a) जम्बिबाब्वे, बोत्सवाना और अंगोला
- ☒ b) सोमालिया, इथियोपिया और जिबूती
- c) अल्जीरिया, मोरक्को और पश्चिम सहारा
- d) लीबिया, सूडान और मिस्र

Q.10

Which one of the following cities is not a former capital of the given country (Country given in the brackets)?

- a) ~~Brisbane (Australia)~~
- b) ~~Kyoto (Japan)~~
- c) ~~Karachi (Pakistan)~~
- d) ~~Auckland (New Zealand)~~

Ans

निम्नलिखित में से कौन सा शहर दिए गए देश (कोष्ठकों में दिया गया देश) की पूर्व राजधानी नहीं है?

- a) ब्रिसबेन, ऑस्ट्रेलिया)
- b) क्योटो (जापान)
- c) कराची, पाकिस्तान)
- d) ऑकलैंड, न्यूज़ीलैंड)

Q.11

Match List-I with List-II and select the correct answer using the code given below the lists.

List I

List II

(Country)

(Largest City)

A. Canada

1. Lagos

B. Greece

2. Damascus

C. Nigeria

3. Toronto

D. Syria

4. Athens

Codes:

A B C D

a) 4 3 2 1

**b) 3 4 1 2**

c) 1 2 4 3

d) 2 3 4 1

Q.12

Pisa famous for leaning tower is located in

- a) Spain
- b) Italy
- c) Australia
- d) France

झुकी हुई मीनार के लिए प्रसिद्ध पीसा अवस्थित है

- a) स्पेन
- b) इटली
- c) ऑस्ट्रेलिया
- d) फ्रांस

Q.13

Which of the following country is located in the South of the Arctic Circle?

Denmark — LAND OF WIND MILLS

Norway — LAND OF MIDNIGHT SUN

Finland — LAND OF 1000 LAKES

Iceland — LAND OF FIRE & ICE

नमिन्लखिति में से कौन सा देश आर्कटिक सर्कल के दक्षिण में स्थित है?

NORTHERN  
MOST —

REYKJAVIK

डेनमार्क  
नॉर्वे  
फिनलैंड  
आइसलैंड

Q.14

List I

- A. Dark Continent
- B. Roof of the World
- C. Country of thousand lakes
- D. Pearls Island

List II

- 1. Finland
- 2. Bahrain
- 3. Africa
- 4. Pamir Knots:

A B C D

- a) 1 2 3 4
- b) 2 1 4 3
- c) 4 3 2 1
- (d) 3 4 1 2**



Q.15

The intersection point of the Prime Meridian and the Equator lies in

- a) Pacific ocean
- b) Morocco
- c) Atlantic ocean
- d) Ghana

प्राइम मेरिडियन और भूमध्य रेखा का अंतर खंड बटु . में स्थित है

- a) प्रशांत महासागर
- b) मोरक्को
- c) अटलांटिक महासागर
- d) घाना

Q.16

Which country is called 'Land of White Elephants'?

- a) South Korea
- b) South Africa
- c) China
- d) Thailand

LAND OF 1000 ELEPHANT

Laos

किस देश को 'सफेद हाथियों की भूमि' कहा जाता है?

- a) दक्षिण कोरिया
- b) दक्षिण अफ्रीका
- c) चीन
- d) थाईलैंड

Q.17

Which one of the following country is geographically located in America but politically is a part of Europe?

- a) Cuba
- b) Greenland
- c) Iceland
- d) Canary Island

नमिन्लखिति में से कौन सा देश भौगोलिक रूप से अमेरिका में स्थित है लेकिन राजनीतिक रूप से यूरोप का हिस्सा है?

- a) क्यूबा
- b) ग्रीनलैंड
- c) आइसलैंड
- d) कैनरी आइसलैंड

SUGAR  
BOWL  
OF  
WORLD

Q.18

Match List-I with List-II and select the correct answer using the code given below the lists.

List I	List II
(Country)	(Capital)
A. Brazil	1. Havana
B. Cuba	2. Brasilia
C. Kenya	3. Lusaka
D. Zambia	4. Nairobi

A B C D

- a) 3 4 1 2  
b) 2 3 1 4  
c) 1 2 3 4  
d) 2 1 4 3

Q.19

Which of these countries forms the longest territorial border with India?

a) Nepal

☒ b) Bangladesh — 4096 — WB/Bengal/MP/TK/MIZO

c) China

d) Pakistan

इनमें से कौन सा देश भारत के साथ सबसे लंबी क्षेत्रीय सीमा बनाता है?

a) नेपाल

b) बांग्लादेश

c) चीन

d) पाकिस्तान

Q.20

MAHI

Which river of Africa crosses the Tropic of Capricorn twice?

- a) Zambezi
- b) Niger
- c) Congo — EQUATOR
- d) Limpopo

अफ्रीका की कौन सी नदी मकर रेखा को दो बार पार करती है?

- a) ज़ाम्बेज़ी
- b) नाइजर
- c) कांगो
- d) लम्पिपोपो

Q.21

Who was the first Indian in independent India to have won a medal in an individual Olympic event ?

स्वतंत्र भारत में व्यक्तिगत ओलंपिक स्पर्धा में पदक जीतने वाले पहले भारतीय कौन थे?

- a) Dhyanchand/ध्यानचंद
- b) K D Jadhav/के डी जाधव
- c) Prithipal Singh/पृथ्वीपाल सहि
- d) Harishchandra Birajdar/हरशिचंद्र बरिजदार

Bronze

1952

HELSINKI



Q.22

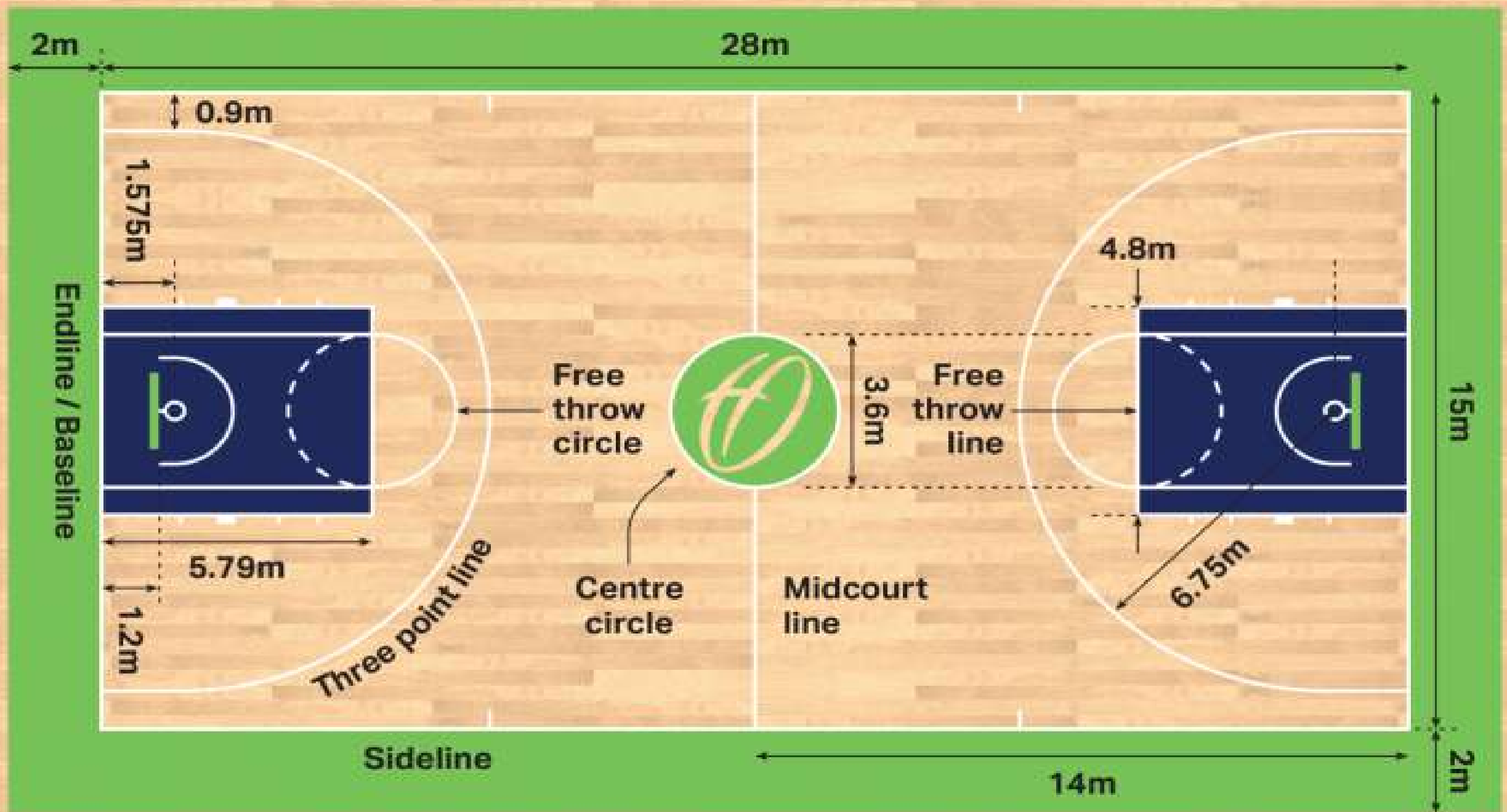
The first World Cup in cricket was held in  
क्रिकेट में पहला विश्व कप आयोजित किया गया था

- a) 1975
- b) 1976
- c) 1983
- d) 1992

Q.23

What is total length of Basketball Court ?  
बास्केटबॉल कोर्ट की कुल लंबाई कतिनी है?

- a) 28meter/28 मीटर
- b) 20meter/20 मीटर
- c) 18meter/18 मीटर
- d) 23meter/23 मीटर



Q.23

Which among the following is the women's equivalent of the Davis Cup?

नमिन्लखिति में से कौन डेवसि कप के महलि समकक्ष है?

- a) Hopman Cup/होपमैन कप
- ☒ b) Fed Cup/फेड कप
- c) BMW Open/बीएमडब्ल्यू ओपन
- d) Millrose Cup/मलिरोज़ कप

BADMINTON

THOMAS  
CUP

FEMALE

UBER  
CUP

Q.24

How many gold Medals India has won in the Tokyo Para Olympics ?

टोक्यो पैरालंपिक में भारत ने कतिने स्वर्ण पदक जीते हैं?

- a) 3
- b) 4
- ☒ c) 5
- d) 6

**AFCAT 2022 | STATIC GK | AFCAT SUPERSONIC |**  
**AFCAT SELECTION KIT में शामिल हों सिर्फ 1379 रुपये में ( कोड लगाये Y191)**

**Q.25**

The word “Jump Ball” is associated with  
“जंप बॉल” शब्द किसके साथ जुड़ा हुआ है?

- ☒ a) Basketball/बासकेटबाल
- b) Baseball/बेसबॉल
- c) Volleyball/वॉलीबाल
- d) Football/फुटबॉल

Q.26

Total number of gold medal won by Indian Hockey Team in Olympics

ओलंपिक्स में भारतीय हॉकी टीम द्वारा जीते गए स्वर्ण पदक की कुल संख्या

- a) 8
- b) 12
- c) 6
- d) 9



Q.27

Who is the first Indian woman to win an Asian Games gold in 400m run?

एशियाई खेलों में 400 मीटर दौड़ में स्वर्ण जीतने वाली पहली भारतीय महिला कौन हैं?

- a) M.L.Valsamma/एम.एल.वलसम्मा
- b) P.T.Usha/पीटी उषा
- ☒ c) Kamaljit Sandhu/कमलजीत संधू
- d) K.Malleshwari/के मल्लेश्वरी

Q.28

How long are professional Golf Tour players allotted per shot?

पेशेवर गोल्फ टूर खिलाड़ियों को प्रति शॉट कतिने समय के लिए आवंटित किया जाता है?

- a) 45seconds/45 सेकंड
- b) 25seconds/25 सेकंड
- c) 1minute/1 मिनट
- d) 2minutes/दो मिनट

Q.29

Last Olympic gold medal won Indian Hockey Team at  
अंतिम ओलंपिक स्वर्ण पदक भारतीय हॉकी टीम ने जीता

- a) - 1980 Moscow Olympic/1980 - मास्को ओलंपिक
- b) - 1964 Japan Olympic/1964 - जापान ओलंपिक
- c) - 1972 Munich/1972 - म्यूनिख
- d) - 1992 Barcelona, Spain/1992 - बार्सलौना, स्पेन

Q.30

Velodrome is an arena for which among the following sporting events ?

वेलोड्रोम नमिन्नलखिति में से कसि खेल आयोजन का अखाड़ा है?

- a) Lawn tennis/लॉन टेनिस
- b) Ice Hockey/आइस हॉकी
- ☒ c) Track Cycling/ट्रैक साइकलिंग
- d) Formula 1 racing/फॉर्मूला 1 रेसिंग

Q.31

The term Deep Dish is related to which of the following Sport ?

डीप डिश शब्द नम्निलखिति में से कसि खेल से संबंधति है?

- a) Basketball/बास्केटबाल
- ☒ b) Volleyball/वालीबाल
- c) Rugby/रग्बी
- d) Baseball/बेसबॉल

**AFCAT 2022 | STATIC GK | AFCAT SUPERSONIC |**  
**AFCAT SELECTION KIT में शामिल हों सिर्फ 1379 रुपये में ( कोड लगाये Y191)**



**Q.32**

Hopman Cup is related with which sports ?  
होपमैन कप कसि खेल से संबंधति है?

- ☒ a) Tennis/टेनसि
- b) Football/फुटबॉल
- c) Badminton/बैडमटिन
- d) Hockey/हॉकी

Q.33

Who won the first silver medal for an individual event at the Olympics for India ?

भारत के लिए ओलंपिक में व्यक्तिगत स्पर्धा के लिए पहला रजत पदक कसिने जीता?

- a) Abhinav Bindra/अभनिव बद्रिा — 2008
- b) Leander Pace/लैंडर पेस
- c) Kshabha Jhadav/केशव जाधव/ — 1952
- ~~d) Rajyavardhan Singh Rathore/राज्यवर्धन सहि राठौर~~

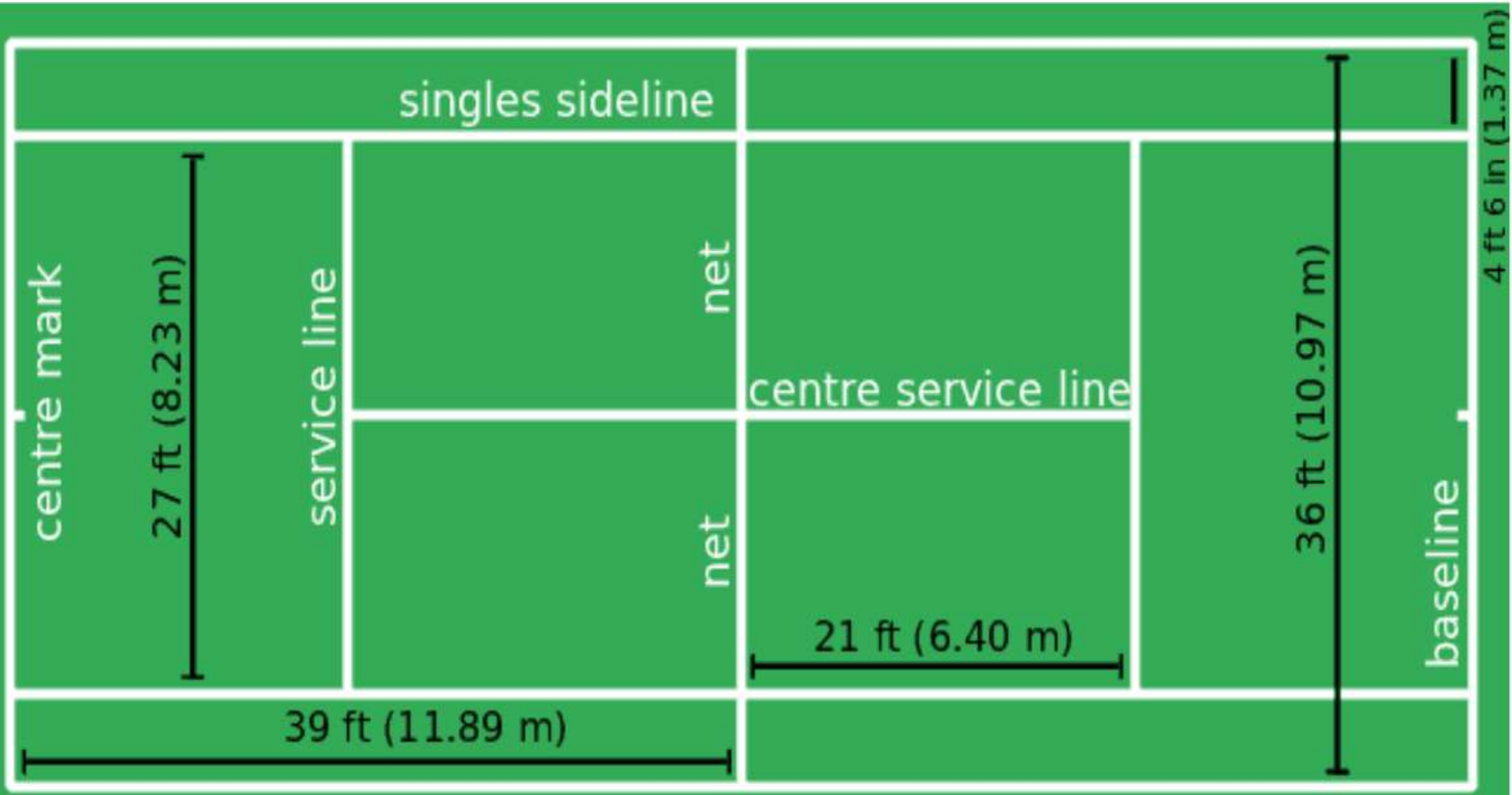
2004 — ANTONIS



Q.34

What is total length of Tennis Court ?  
टेनिस कोर्ट की कुल लंबाई कतिनी है?

- a) ✓ 78Feet(23.77 Meter)/78 फीट (23.77 मीटर)
- b) 21Feet (6.40 Meter)/21 फीट (6.40 मीटर)
- c) 36Feet ( 10.97 Meter)/36 फीट (10.97 मीटर)
- d) 27Feet (8.23 Meter)/27 फीट (8.23 मीटर)



# AFCAT SELECTION KIT



**LIVE CLASS**

Y191



**TEST SERIES**



**E BOOK'S**

**Get  
@1379  
only**

1379

BILINGUAL



**AFCAT 2 2022**

**SELECTION KIT**

**Live Class | E-Books | Test Series**

**Starts July 1, 2022**

**10 AM to 1 PM**

**USE CODE**

**Y191**

Q.35

‘Free throw’ is associated with  
'फ्री थ्रो' का संबंध से है

- a) ☒ Basketball/बास्केटबाल
- b) Hockey/हॉकी
- c) Volleyball/वालीबाल
- d) Football/फुटबॉल

Q.36

What was the name of the Commonwealth Games in the starting from 1930 to 1950?

1930 से 1950 की शुरुआत में राष्ट्रमंडल खेलों का क्या नाम था?

ASIAN GAMES → GORUHUT 100M

- a) British Commonwealth Games/ब्रिटिश राष्ट्रमंडल खेल
- b) British Empire and Commonwealth Games/ब्रिटिश साम्राज्य और राष्ट्रमंडल खेल
- ~~c) British Empire Games/ब्रिटिश साम्राज्य खेल~~
- d) Commonwealth Games/राष्ट्रमंडल खेल

FATHER OF  
COMMONWEALTH  
GAMES

→ BOBBY  
ROBBIONS

FATHER OF — PIERRE-DE-COUBERTIN  
OLYMPICS

FATHER OF PARALYMPICS — LUDWIG GUTTMAN

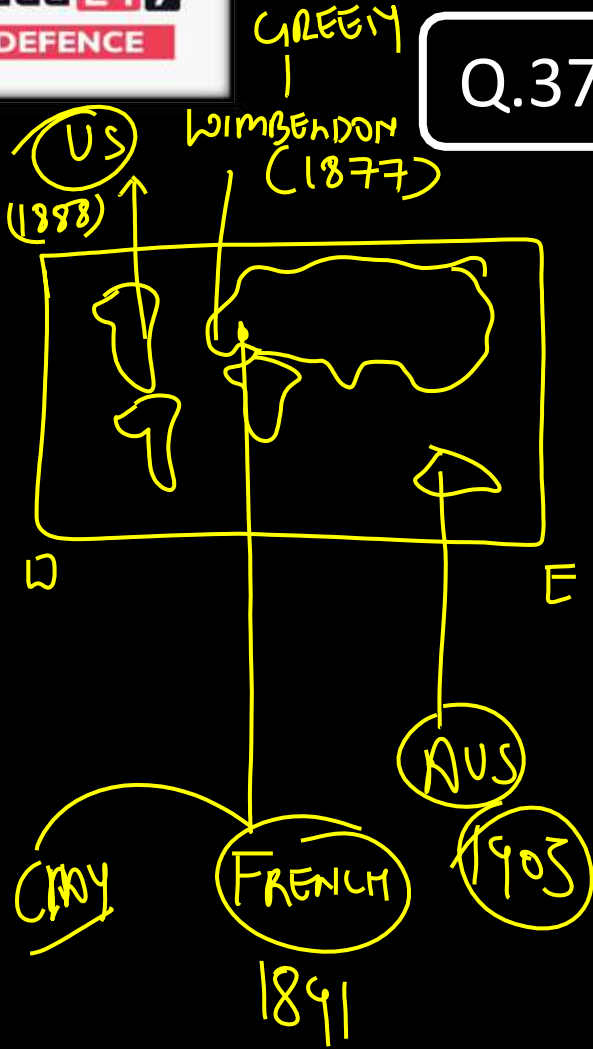


Q.37

Which one of the following Grand Slam titles is also known as “Rolland Garros” title ?

नमिन्लखिति में से कसि ग्रैंड स्लैम खतिब को "रोलैंड गैरोस" शीर्षक के रूप में भी जाना जाता है?

- a) French Open/फ्रेंच ओपन
- b) Wimbledon/वबिलडन
- c) U.S Open/यूएस ओपन
- d) Australian Open/ऑस्ट्रेलियन ओपन



Q.38

Where is the headquarters of the International Olympic Committee located ?

अंतर्राष्ट्रीय ओलंपिक समिति का मुख्यालय कहाँ स्थित है?

- a) Italy/इटली
- b) France/फ्रांस
- c) Belgium/बेल्जियम
- d) Switzerland/स्वट्ज़रलैंड

COCKPIT OF EUROPE

PLAYGROUND OF EUROPE

BRUSSELS  
NATO

NZ/POS  
2023

WORLD

ZURICH

FIFA

2022 - QATAR  
2026 - USA/CAN/MEX

ICF

RUSSIAN

IOC

FIH

OLY - 2024 - PARIS  
2028 - LOS ANGELES (USA)  
2032 - BRISBANE (AUS)

Q.39

The number of players in each side in Water Polo is  
वाटर पोलो में प्रत्येक पक्ष में खिलाड़ियों की संख्या होती है

- a) 6
- ☒ b) 7
- c) 8
- d) 9



Q.40

When was the first Common Wealth Games held ?  
प्रथम कॉमन वेल्थ गेम्स कब आयोजति कियो गया था?

- a) 1930 — HAMMILTON | CANADA
- b) 1924
- c) 1896 — OLYMPIC
- d) 1960 — PARALYMPIC

2022 — BIRMINGHAM  
2026 → VICTORIA (CAN)

CHAMONIX (FRA)  
(WINTER  
OLYMPIC)

2026 — ITALY

Q.41

Number of players in Volleyball ?  
वॉलीबॉल में खिलाड़ियों की संख्या?

- a) 9
- ☒ b) 6
- c) 5
- d) 4

Q.42

Number of players in Volleyball ?  
वॉलीबॉल में खिलाड़ियों की संख्या?

- a) 9
- b) 6
- c) 5
- d) 4

## International Organisation and Headquarters

### SUPERSONIC SERIES

**Q.1**

Where is the “International Fund for Agricultural Development” (IFAD) headquartered?

- A) Nairobi, Kenya — <sup>520HE</sup> UNEP (1972) | UN HABITAT
- B) Brussels, Belgium — NATO | EU | WSO | WCO | <sup>IDF</sup> ~~WDF~~
- C) Paris, France — UNSEL | FATF | ESP | IAN | OECD
- ~~D) Rome, Italy — IFAD | UN WFP | FAO~~

1961

1945

## International Organisation and Headquarters SUPERSONIC SERIES

Q.2

Where is the “Multilateral Investment Guarantee Agency (MIGA)” headquartered ?

- A) Washington, D.C. , USA — IMF
- B) Geneva , Switzerland
- C) Montreal , Canada — ICRO | INTA | WADA
- D) Munich , Germany — ISSF

## International Organisation and Headquarters SUPERSONIC SERIES

Q.3

“Global Money Laundering Report” is published by which organisation ?

- A) World Intellectual Property Organization(WIPO)
- B) World Bank — *WDR*
- ☒ C) Financial Action Task Force(FATF) //
- D) United Nations Organizations (UNO)

*GII — 43 IND*

# AFCAT SELECTION KIT



**LIVE CLASS**



**TEST SERIES**



**E BOOK'S**

**Get  
@1379  
only**

**BILINGUAL**



**AFCAT 2 2022**

**SELECTION KIT**

**Live Class | E-Books | Test Series**

**Starts July 1, 2022**

**10 AM to 1 PM**

**USE CODE**

**Y191**



## International Organisation and Headquarters SUPERSONIC SERIES

Q.4

The main objectives of International Atomic Energy Agency are to promote the peaceful use of

- ☒ A. Nuclear Energy.
- B. Global Trade.
- C. Military Power.
- D. Veto Power



## International Organisation and Headquarters SUPERSONIC SERIES

Q.5

Where is the headquarters of the “International Shooting Sport Federation” (ISSF) located?

- A) Madrid, Spain
- B) Geneva, Switzerland
- ☒ C) Munich, Germany
- D) London, UK

UNWTD

→ 12 mo

## International Organisation and Headquarters SUPERSONIC SERIES

Q.6

“The Global Risk Report” is published by which organization?

- ☒ A) World Economic Forum (WEF)
- B) World Bank
- C) Bank of International Settlements(BIS)
- D) United Nations Development Programme(UNDP)

COHOCEMY  
(SWIS)

## International Organisation and Headquarters SUPERSONIC SERIES

Q.7

Where is the headquarters of the “SAARC Development Fund”(SDF) located ?

- ~~A) Thimphu, Bhutan~~
- B) Mandaluyong, Philippines *ADB*
- C) Brussels, Belgium *NATO*
- D) Jakarta, Indonesia *X ASEAN*

**International Organisation and Headquarters**  
**SUPERSONIC SERIES**

**Q.7**

The headquarters of the “International Energy Agency (IEA)” is located in \_\_\_\_\_.

- A) Washington, D.C., United States
- B) Geneva, Switzerland
- C) Rome, Italy
- ~~D) Paris, France~~

## International Organisation and Headquarters SUPERSONIC SERIES

Q.8

The W.T.O. came into being on

- a) 1st April, 1994
- ~~b) 1st April, 1995~~
- c) 1st January, 1995
- d) 1st January, 1996

GATT

**International Organisation and Headquarters**  
**SUPERSONIC SERIES**

**Q.9**

Which country is the largest debtor of UNO?

- a) China
- b) India
- c) Japan
- ☒ d) USA

**International Organisation and Headquarters**  
**SUPERSONIC SERIES**

**Q.10**

The United Nations Conference on Trade & Development (UNCTAD) is located at\_\_\_\_\_

- ☒ A) Geneva, Switzerland
- B) Copenhagen, Denmark
- C) Dubai, United Arab Emirates
- D) New York, United States

## International Organisation and Headquarters SUPERSONIC SERIES

Q.11

The International Golf Federation (IGF) is based in\_\_\_\_\_

- A) Kuala Lumpur, Malaysia
- ☒ B) Lausanne, Switzerland
- C) Munich, Germany
- D) Budapest, Hungary

WORLD  
WRESTLING



**International Organisation and Headquarters**  
**SUPERSONIC SERIES**

**Q.12**

The headquarter of Universal Postal Union is in which country?

- A) Budapest, Hungary
- B) Beijing, China
- ☒ C) Bern, Switzerland
- D) Brussels, Belgium

**International Organisation and Headquarters**  
**SUPERSONIC SERIES**

**Q.13**

Where is the headquarter of North Atlantic Treaty Organisation (NATO) located?

- A) Rome, Italy
- B) Jakarta, Indonesia
- C) Copenhagen, Denmark
- ☒ D) Brussels, Belgium

**International Organisation and Headquarters**  
**SUPERSONIC SERIES**

**Q.14**

Which organisation publishes the Democracy Index?

- A) Transparency International
- B) International Monetary Fund
- C) World Intellectual Property Organization
- ☒ D) Economist Intelligence Unit

**International Organisation and Headquarters**  
**SUPERSONIC SERIES**

**Q.15**

Where is the headquarters of the “International Organization of Securities Commissions” (IOSCO) located?

- A) Nairobi, Kenya
- B) Washington D.C. ,USA
- ~~C) Madrid, Spain~~
- D) Zurich, Switzerland

## International Organisation and Headquarters SUPERSONIC SERIES

**Q.16**

Which of these United Nations organization is headquartered in Tokyo, Japan?

- a) United Nations World Tourism Organisation (UNWTO)
- b) United Nations World Food Program (UNWFP)
- ☒ c) United Nations University (UNU)
- d) United Nations Industrial Development Organisation (UNIDO)

**International Organisation and Headquarters**  
**SUPERSONIC SERIES**

**Q.17**

The headquarter of United Nations Populations Fund (UNFPA) is located at \_\_\_\_\_

- ☒ A) New York
- B) London
- C) Paris
- D) Washington DC

**International Organisation and Headquarters**  
**SUPERSONIC SERIES**

**Q.18**

The headquarter of which of these sports federations is based in Monaco ?

- A) FIFA
- B) International Shooting Sport Federation
- C) World Chess Federation
- ☒ D) World Athletics

2021 — USA

2023 — HUNGARY



# AFCAT SELECTION KIT



**LIVE CLASS**



**TEST SERIES**



**E BOOK'S**

**Get  
@1379  
only**

BILINGUAL



**AFCAT 2 2022**

**SELECTION KIT**

**Live Class | E-Books | Test Series**

**Starts July 1, 2022**

**10 AM to 1 PM**

**USE CODE**

**Y191**



**International Organisation and Headquarters**  
**SUPERSONIC SERIES**

**Q.19**

Where is the headquarters of the “United Nations Human Settlement Programme” (UN-Habitat) located ?

- A) New York City, USA
- ~~B) Nairobi, Kenya~~
- C) Rome, Italy
- D) Geneva, Switzerland

## International Organisation and Headquarters SUPERSONIC SERIES

Q.21

Where is the headquarter of International Fund for Agricultural Development (IFAD) based?

- A) Singapore
- B) Paris
- ~~C) Rome~~
- D) Lausanne

NPEC

**International Organisation and Headquarters**  
**SUPERSONIC SERIES**

**Q.20**

Where is the headquarters of the “Badminton World Federation” (BWF) located ?

- A) Kuala Lumpur, Malaysia
- B) London , UK
- C) Lausanne, Switzerland
- D) Paris, France

**International Organisation and Headquarters**  
**SUPERSONIC SERIES**

**Q.22**

Where is the headquarter of World Customs Organization (WCO) located?

- a) Paris, France
- ☒ b) Brussels, Belgium
- c) Gland, Switzerland
- d) Lyon, France

## International Organisation and Headquarters SUPERSONIC SERIES

**Q.23**

Which organization releases the Corruption Perception Index (CPI) every year?

- a) World Economic Forum
- b) World Intellectual Property Organization
- c) The Economist Intelligence Unit
- ☒ d) Transparency International

**International Organisation and Headquarters**  
**SUPERSONIC SERIES**

**Q.24**

The International Maritime Organisation (IMO) has its headquarter based in\_\_\_\_\_

- a) London
- b) Paris
- c) Geneva
- d) New York

**International Organisation and Headquarters**  
**SUPERSONIC SERIES**

**Q.25**

United Nations Industrial Development Organization (UNIDO) has its headquarter in which place?

- a) Paris, France
- b) Rome, Italy
- c) The Hague, Netherlands
- ☒ d) Vienna, Austria

ICT

**International Organisation and Headquarters**  
**SUPERSONIC SERIES**

**Q.26**

What is India's current rank in World press freedom Index 2022?

- a. 132
- b. 142
- c. 150
- d. 153



**International Organisation and Headquarters**  
**SUPERSONIC SERIES**

**Q.27**

Which country topped in Economist Intelligence Unit (EIU) Democracy Index 2021?

- a. Sweden
- b. Australia
- ☒ c. Norway
- d. Finland

**International Organisation and Headquarters**  
**SUPERSONIC SERIES**

**Q.28**

What is the rank of India in the Corruption Perceptions Index for 2021 released by Transparency international?

- a. 70
- b. 105
- c. 85
- d. 45

**International Organisation and Headquarters**  
**SUPERSONIC SERIES**

**Q.29**

Where is the headquarters of the “International Criminal Court” (ICC) located ?

- ☒ A) The Hague, The Netherlands
- ☐ B) Brussels, Belgium
- ☐ C) Geneva, Switzerland
- ☐ D) Washington DC, US

**International Organisation and Headquarters**  
**SUPERSONIC SERIES**

**Q.30**

The headquarters of the (SIPRI) is located at \_\_\_\_\_.

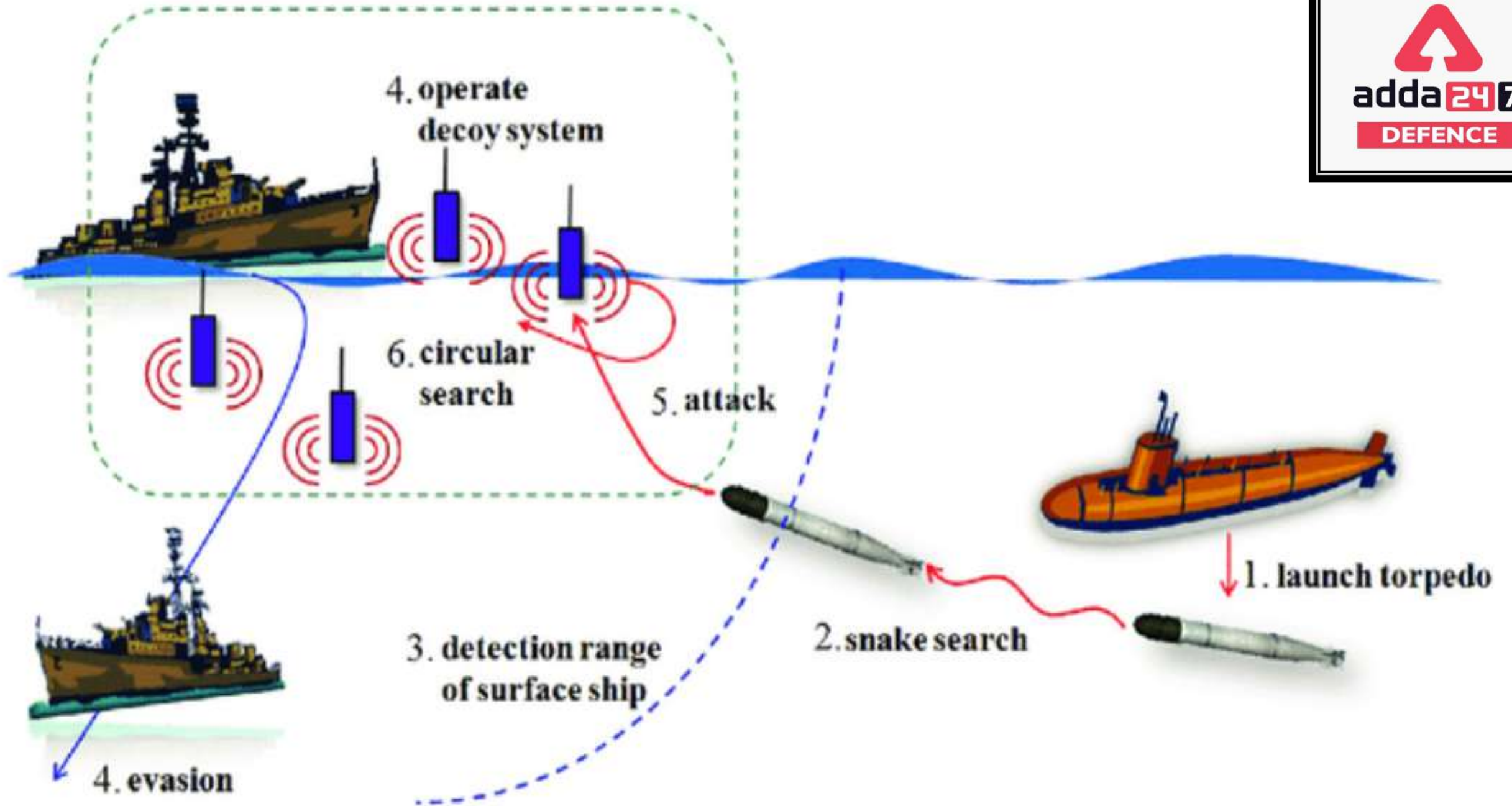
- A) Kenya
- ~~B) Sweden~~
- C) Brussels
- D) Switzerland

**Q.1**

Which of the following is Advanced Torpedo Defence System (ATDS) inducted by Indian Navy into its arsenal ?

नमिन्लखिति में से कौन भारतीय नौसेना द्वारा अपने शस्त्रागार में शामिल उन्नत टारपीडो रक्षा प्रणाली (एटीडीएस) है?

- a) Varunastra/वरुणास्त्र
- ☒ b) Maareech/मारीच
- c) Sagarika/सागरिका
- d) Dhurvastra/धुर्वास्त्रः



## DEFENCE AND MILITARY GK for AFCAT, CDS, CAPF 2022

Q.2

Infantry School of the Indian Army is located at which place ?  
भारतीय सेना का इन्फैंट्री स्कूल कसि स्थान पर स्थित है?

- a) Vairengte/वैरेंगटे — JUNGLE
- b) Belgaum/बेलगाम — COMMOND
- ~~c) Mhow/महू — INFANTRY~~
- d) Deolali/देवलाली — ARTILLERY

## DEFENCE AND MILITARY GK for AFCAT, CDS, CAPF 2022

Q.3

Which of the following gallantry award is not associated with other three ?

नमिन्लखिति में से कौन सा वीरता पुरस्कार अन्य तीन से संबंधति नहीं है?

WNR

- a) Param Vir Chakra/परम वीर चक्र
- b) Maha Vir Chakra/महा वीर चक्र
- c) Vir Chakra/वीर चक्र
- d) Shaurya Chakra/शौर्य चक्र



**Q.4**

In the structure of the Indian Army a company is commanded by which officer ?

भारतीय सेना की संरचना में एक कंपनी की कमान कसि अधिकारी के पास होती है?

- a) Colonel/कर्नल
- ☒ b) Major/मेजर
- c) Lieutenant/लेफ्टनिेंट
- d) Lieutenant Colonel/लेफ्टेनंट कर्नल

# AFCAT SELECTION KIT



**LIVE CLASS**



**TEST SERIES**



**E BOOK'S**

**Get  
@1379  
only**

**BILINGUAL**



**AFCAT 2 2022**

**SELECTION KIT**

**Live Class | E-Books | Test Series**

**Starts July 1, 2022**

**10 AM to 1 PM**

**USE CODE**

**Y191**

## DEFENCE AND MILITARY GK for AFCAT, CDS, CAPF 2022

**Q.5**

What is the name given to India's first-ever satellite and nuclear-missile tracking ship?

भारत के पहले उपग्रह और परमाणु-मिसाइल ट्रैकिंग जहाज को क्या नाम दिया गया है?

- a) INS Tez
- b) INS Parvat
- c) INS Eklavya
- d) INS Dhruv

**Q.6**

The Indian Navy successfully test-fired the extended-range land-attack Brahmos supersonic cruise missile from which stealth destroyer?

भारतीय नौसेना ने कसि स्टील्थ वधिवंसक से वसितारति दूरी की भूमि-हमला ब्रह्मोस सुपरसोनिक क् रूज मसिङ्गल का सफलतापूर्वक परीक्षण कयिा?

- a) INS Chennai/आईएनएस चेन्नई
- b) INS Vikramaditya/आईएनएस विक्रमादित्य
- c) INS Shakti/आईएनएस शक्ति
- d) INS Arihant/आईएनएस अरिहंत

## DEFENCE AND MILITARY GK for AFCAT, CDS, CAPF 2022

Q.7

Who became Indian Army's first woman combat aviator?  
भारतीय सेना की पहली महिला लड़ाकू एविएटर कौन बनी?

- a) Captain Divya Ajith Kumar/कैप्टन दिव्या अजति कुमार
- b) Captain Ganeve Lalji/कप्तान गनेवे लालजीक
- c) Captain Tania Shergill/कप्तान तानिया शेरगलि
- ☒ d) Captain Abhilasha Barak/कप्तान अभलिषा बराक





# Captain Abhilasha Barak

Becomes 1st Woman Officer  
to Join  
Army Aviation Corps as  
Combat Aviator

**Q.8**

Which one of the following Frigates was decommissioned from Indian Navy?

नमिन्लखिति में से कौन सा फ्रिगेट भारतीय नौसेना से सेवामुक्त कियो गया था?

- a) INS Trikand/आईएनएस त्रकिंद
- b) INS Tir/आईएनएस तीर
- ☒ c) INS Gomati/आईएनएस गोमती
- d) INS Tarkash/आईएनएस तरकश

**Q.9**

Which of the following is not a Air – To – Air Missile ?

नम्निलिखित में से कौन हवा से हवा में मार करने वाली मसिइल नहीं है?

- a) ASTRA
- b) MICA
- ☒ c) METEOR
- d) SCALP

INDIA



**Q.10**

Which of the following is correct about "NAG Missile" ?

- a) Surface-to-surface Missile
- b) Air-to-Air guided missile
- c) Intercontinental ballistic missile
- d) ☒ Anti-tank guided missile

नम्निनलखिति में से कौन "नाग मसिइल" के बारे में सही है?

- a) सतह से सतह पर मार करने वाली मसिइल
- b) हवा से हवा में मार करने वाली नरिदेशति मसिइल
- c) अंतरमहाद्वीपीय बैलसिटिकि मसिइल
- d) टैंक रोधी नरिदेशति मसिइल

**Q.11**

Which one of the following indigenously developed Air-to-Air Missile is integrated in SU-30 MKI Fighter Jet?

नमिन्लखिति में से कौन सी स्वदेश में वकिसति हवा से हवा में मार करने वाली मसिइल SU-30 MKI फाइटर जेट में एकीकृत है?

- a) R-73 Vypel/आर-73 वम्पेल
- b) BrahMos/ब्रह्मोस
- ☒ c) Astra Missile/एस्ट्रा मसिइल
- d) Meteor Missile/मीटअिर मसिइल

*S0222*

**Q.12**

Which of the following is a IR Missile

- a) Astra
- b) Hammer
- c) Scalp
- ☒ d) Python

**Q.13**

Which of the following missile is/are fitted with Rafale ?

- a) SCALP
- b) Meteor
- c) Hammer
- ☒ d) All of the Above

# [ ARMED WITH ]

## **SCALP**

*Air-to-ground  
cruise missiles*

**STRIKE RANGE:**  
Over 300 km

## **HAMMER**

*Air-to-ground  
missiles*

**STRIKE RANGE:**  
60-70 km

## **MICA**

*Air-to-air  
missiles*

**STRIKE RANGE:**  
Visual  
and beyond

## **METEOR**

*Air-to-air  
missiles*

**STRIKE RANGE:**  
120-150 km



**Q.14**

Which of the following is correct about "Agni Series Missiles" ?

- ☒ a) Intercontinental ballistic missile
- b) Anti-tank guided missile
- c) Air to Air Missile
- d) Surface-to-Air missile

**Q.15**

Which of the following is correct about indigenously developed "K-15 Missile" ?

- a) Surface-to-surface missile
- ☒ b) Submarine-launched ballistic missile
- c) Anti-tank guided missile
- d) Air to Air Missile

**Q.16**

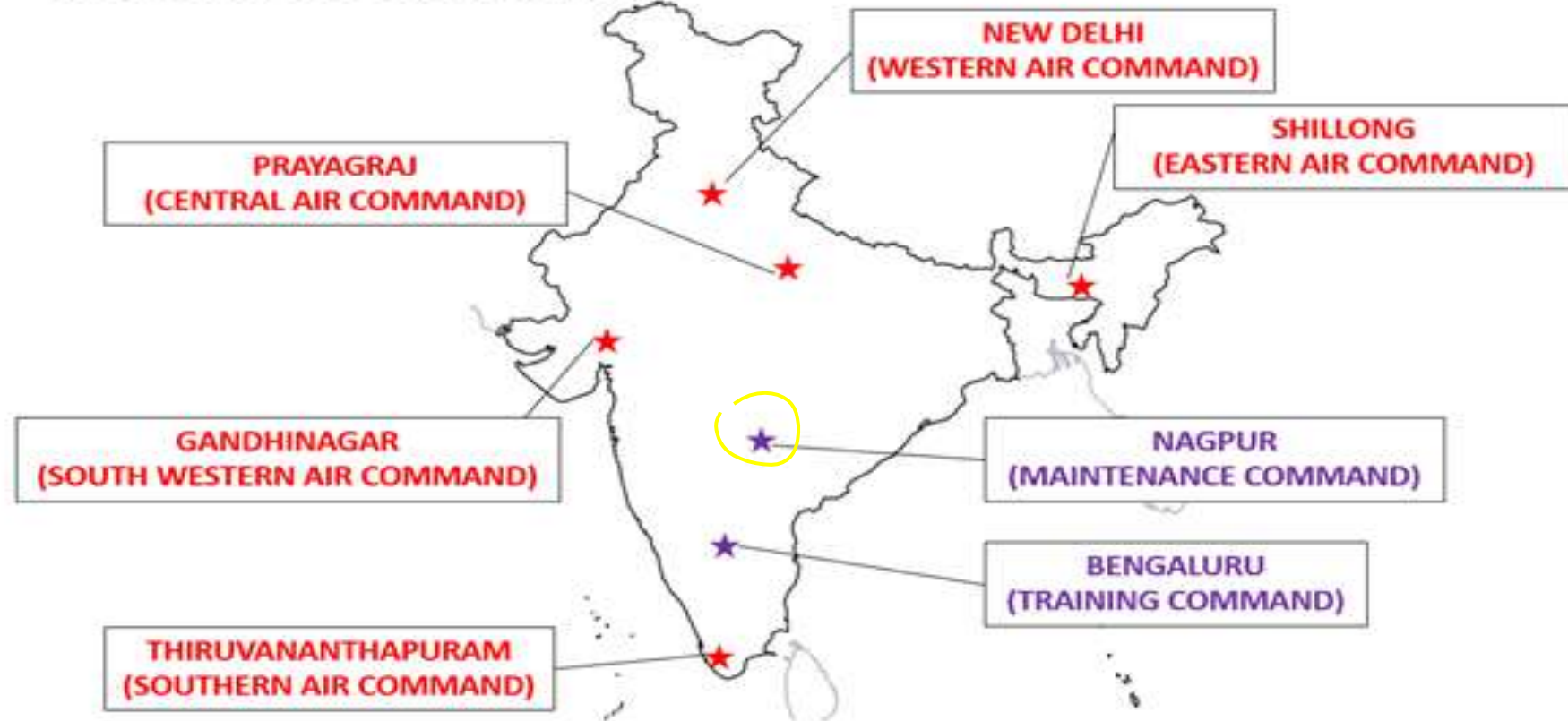
Where is the Training Command of Indian Air Force located?

- a) Chennai
- b) Hyderabad
- ☒ c) Bangalore
- d) Nagpur



## DEFENCE AND MILITARY GK for AFCAT, CDS, CAPF 2022

### Locations of Command HQs:



**Q.17**

Where is the Western Command of IAF located?

- a) Jodhpur
- ☒ b) New Delhi
- c) Gandhinagar
- d) Gwalior

**Q.18**

Which of the following aircraft is the air-to-air refueller of the Indian Air Force?

- a) C – 17 Globemaster
- b) Ilyushin - 76
- ☒ c) Ilyushin - 78
- d) C – 130J Hercules

**Q.19**

Wing Commander Abhinandan belonged to which squadron during Balakot Strikes?

- Tejas [
- a) 45 Squadron IAF
  - b) 18 Squadron IAF
  - © 51 Squadron IAF
  - d) 7 Squadron IAF

**Q.20**

What is the name of operation conducted by the Indian Air Force during 1999 Kargil War?

- a) Operation Vijay
- b) Operation Poomalai
- ☒ c) Operation Safedsagar
- d) Operation Bandar

**Q.21**

What is the equivalent rank of Indian Army Colonel in the Indian Air Force?

- a) Squadron Leader
- b) Air Marshal
- ☒ c) Group Captain
- d) Wing Commander

**Q.22**

What is the equivalent rank of Indian Army Colonel in the Indian Air Force?

- a) Squadron Leader
- b) Air Marshal
- c) Group Captain
- d) Wing Commander

Indian Army	Indian Navy	Indian Air Force
General	Admiral	Air Chief Marshal
Lieutenant General	Vice Admiral	Air Marshal
Major General	Rear Admiral	Air Vice Marshal
Brigadier	Commodore	Air Commodore
Colonel	Captain	Group Captain
Lieutenant Colonel	Commander	Wing Commander
Major	Lieutenant Commander	Squadron Leader
Captain	Lieutenant	Flight Lieutenant
Lieutenant	Sub-Lieutenant	Flying Officer



**Q.23**

Which one of the following is not one of the commands of the Indian Army ?

- a) South Western Command
- ☒ b) North Eastern Command
- c) Central Command
- d) Army Training Command (ARTRAC)

# ***COMMANDS IN INDIAN ARMY***



**Q.24**

The rank of Captain of the Indian Navy is equivalent to which one of the following ?

- a) Captain of the Indian Army
- ☒ b) Group Captain in the Indian Air Force
- c) Lieutenant Colonel of the Indian Army
- d) Wing Commander of the Indian Air Force

**Q.25**

Who is the only recipient of Param Vir Chakra in the Indian Air Force?

- a) Flying Officer Nirmal Jit Singh Sekhon
- b) Squadron Leader Denzil Keelor
- c) Squadron Lead Trevor Keelor
- d) Wing Commander Abhinandan Varthaman

**Q.26**

Which country has signed agreement with India to procure BrahMos Supersonic Cruise Missile?

- a) Thailand
- b) Taiwan
- ☒ c) Philippines
- d) Brazil

## DEFENCE AND MILITARY GK for AFCAT, CDS, CAPF 2022

**Q.27**

Which is the only Tri-services command of Indian Armed Forces?

2000

- (a) Andaman and Nicobar Command
- b) Surya Shakti Command
- c) Central Air Command
- d) Western Naval Command

**Q.28**

Which is the only Tri-services command of Indian Armed Forces?

- a) Andaman and Nicobar Command
- b) Surya Shakti Command
- c) Central Air Command
- d) Western Naval Command

**Q.29**

MH-60 Romeo Helicopters which were recently procured by Indian Navy is from which country?

- a) UK
- b) France
- c) Russia
- d) USA



**Q.30**

The Headquarters of the Southern Naval Command of the Indian Navy is located at which one of the following place ?

- a) Vishakhapatnam
- b) Thiruvananthapuram
- ☒ c) Kochi
- d) Chennai



**WESTERN  
NAVAL COMMAND  
MUMBAI**

**SOUTHERN  
NAVAL COMMAND  
KOCHI**

**EASTERN  
NAVAL COMMAND  
VISA KHAPATNAM**





*Biggest*

**MONTH-END**

**Surprise**

Exam koi bhi, Prep Sirf

**adda247** ke sath

.....

$$6+6=2524$$

$$12+12=3219$$

**+Double Validity**

Flat **77%** OFF

**All Mahapacks & Live Classes**

**USE CODE**

**Y191**

**BUY NOW ON ADDA247 APP**

*Offer Ending Soon!*





**AFCAT| CDS|CAPF|CISF|AGNIVEER ARMY,NAVY, AIR FROCE**

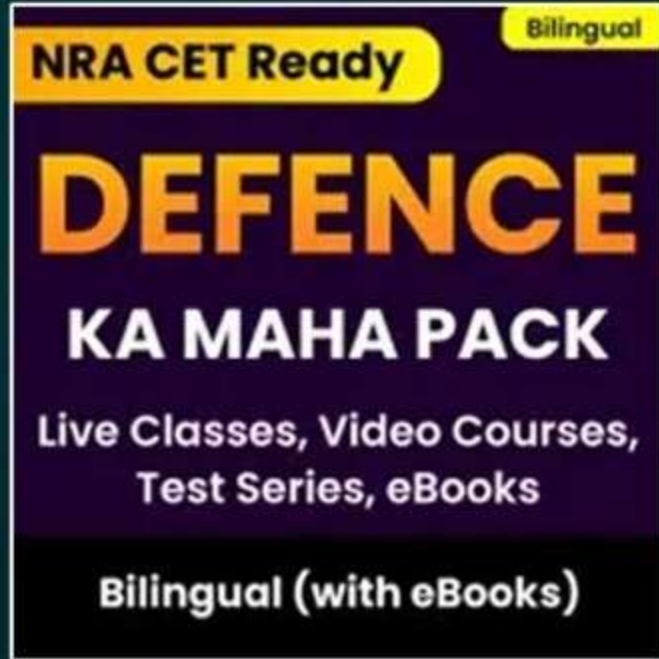
# DEFENCE MAHAPACK

## SPECIAL FEATURES:-

- » Structured Course Content
- » Recorded Classes Available If You Miss Any Live Class
- » Previous Year Paper Of All Exams
- » Full Length Mock's Based On The Latest
- » Pattern With Detailed Solution
- » Topic Level Knowledge Tests
- » Strategy Session , Time Management &
- » Preparation Tips From The Experts
- » Language - English & Hindi Medium

**Get  
77% OFF**

**Additional 1% on App**



**USE CODE**

**Y191**



# AGNIVEER NAVY | ARMY



Y191

## COMPLETE BATCH

## FLASH SALE

**BILINGUAL**



**TARGET INDIAN NAVY**

**AGNIVEER SSR/MR**

**2022 Complete Batch**

Starts July 22, 2022 **3 PM to 6 PM**

**BILINGUAL**



**TARGET INDIAN ARMY**

**AGNIVEER 2022**

**Complete Batch**

Starts July 22, 2022 **3 PM to 6 PM**

GET AT  
**₹ 827**  
EACH

USE CODE

**Y191**



# AFCAT SELECTION KIT



**LIVE CLASS**



**TEST SERIES**



**E BOOK'S**

**Get  
@1379  
only**

BILINGUAL



**AFCAT 2 2022**

**SELECTION KIT**

**Live Class | E-Books | Test Series**

**Starts July 1, 2022**

**10 AM to 1 PM**

**USE CODE**

**Y191**