

ESH 150-12 AGM

12V - 150Ah

High Rate Discharge Series

INTRODUCTION

Rocket ESH Series is designed for the application which requires high power output. ESH series can deliver 50% more power than ESC Series of Rocket Batteries. This is achieved by optimizing the grid plate design and by using advanced plate paste formula.

Through its constant research and development, Global has continued to lead its nation's storage battery industry. From the beginning, Global's motto has been to provide its customers with "more powerful and durable batteries". Therefore, Global has been in the pursuit of quality advanced technology in the battery manufacturing business. In order to stay in competition with the international battery market, Global has established capital and technical ties with the world's most renowned battery manufacturers, such as Yuasa Corporation of Japan, Hagen Batteries AG. of Germany, and SAFT of France.

TECHNICAL FEATURES

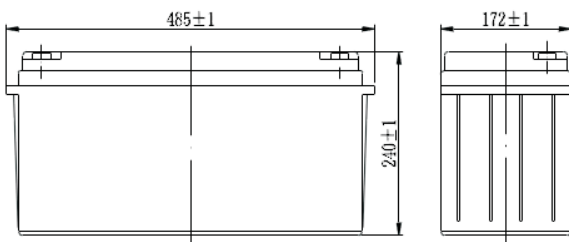
- Non-Spillable Sealed Construction
- Absorbent Glass Mat System (AGM System)
- ABS (Acrylonitrile Butadiene Styrene) container and cover
- Gas Recombination
- Maintenance-Free Operation
- Low Pressure Venting System
- Heavy - Duty Grids
- Low Self-Discharge - Long Shelf Life
- Wide Operating Temperature Range

APPLICATIONS

- UPS
- Telecom Communication Equipments
- Fire Alarm & Security Systems
- Medical Instruments
- Emergency Lighting
- Computer Backup

COMPLAINTS STANDARD

- JIS C8702, BS 6290/4 and IEC 896/2
- Eurobat Guide/HF
- ISO9001/ISO14000



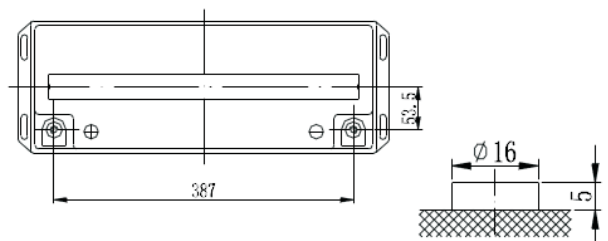
SPECIFICATION

Nominal Voltage		12V
Capacity (20HR, 25°C)		157.2Ah
Dimension	Length	485mm (19.09inch)
	Width	172mm (6.77inch)
	Height	240mm (9.45inch)
	Total Height	240mm (9.45inch)
Approx Weight		46.4kg (103.6lbs)
Design Life		10 Years

CHARACTERISTICS

Capacity 25°C (77°F)	20 hour rate	157.2 Ah
Capacity (W) 1.60V, 20°C	10 min	650
Internal resistance (Fully charge, 25°C)		2.9mΩ
Self-discharge (25°C)	1 month	Remaining Capacity:97%
Operating temperature range	Discharge	-20°C~60°C
	Charge	-10°C~60°C
	Storage	-20°C~60°C
Maximum discharge current		77°F(25°C) 1000A(5 Sec.) Cycle Use 14.4 to 14.7V
Charge Methods (Constant Voltage Charge 77°F(25°C)) - Cyclic Use		Max. charging Current 45A Temp. compensation - 30mV/°C
Charge Methods (Constant Voltage Charge 77°F(25°C)) - Standby Use		Standby Use 13.6-13.8V Temp. compensation - 20mV/°C

THE BATTERY CONTAINER AND COVER ARE AVAILABLE BOTH IN ABS plastic and Flame Retardant (FR).



ESH 150-12 AGM - VRLA

12V - 150Ah

High Rate Discharge Series

CONSTANT CURRENT DISCHARGE (Amperes) at 25°C

End Point Volts/Cell	10min	15min	20min	25min	30min	35min	40min	45min	50min	55min
1.60V	365	306	256	226	206	181	162	148	135	124
1.65V	346	290	243	215	196	172	154	140	128	118
1.70V	326	274	230	203	185	163	146	133	122	112
1.75V	306	258	216	191	175	154	138	126	115	107
1.80V	294	249	210	186	170	150	135	123	113	104

End Point Volts/Cell	60min	1.5h	2h	2.5h	3h	4h	5h	6h	7h	8h	9h	10h	12h	24h
1.60V	115	81.0	63.8	53.5	46.7	36.4	30.3	25.9	22.7	20.4	18.6	17.1	14.4	7.35
1.65V	110	77.3	61.0	51.2	44.7	34.9	29.1	24.8	21.8	19.6	17.8	16.4	13.9	7.1
1.70V	105	73.7	58.2	48.9	42.7	33.4	27.8	23.8	20.9	18.8	17.1	15.8	13.4	6.85
1.75V	99.3	70.0	55.3	46.6	40.7	31.9	26.6	22.8	20	18	16.4	15.1	12.9	6.6
1.80V	97.1	68.5	54.2	45.6	39.9	31.3	26.1	22.4	19.7	17.7	16.1	14.9	12.7	6.52

CONSTANT POWER DISCHARGE (Watts per cell) at 25°C

End Point Volts/Cell	10min	15min	20min	25min	30min	35min	40min	45min	50min	55min
1.60V	650	550	457	402	365	324	294	270	246	226
1.65V	626	530	442	389	353	314	285	262	239	220
1.70V	602	511	426	376	342	304	276	254	232	214
1.75V	577	492	411	362	330	294	267	246	225	207
1.80V	553	473	396	349	318	284	258	238	218	201

End Point Volts/Cell	60min	1.5h	2h	2.5h	3h	4h	5h	6h	7h	8h	9h	10h	12h	24h
1.60V	210	149	118	100.0	87.7	70.8	60.7	51.8	45.4	40.7	37	34	29.4	15.2
1.65V	204	145	115	97.4	85.5	69.1	59.3	50.7	44.5	39.8	36.2	33.3	28.9	15
1.70V	199	141	112	94.8	83.3	67.5	57.9	49.5	43.5	39	35.5	32.7	28.4	14.7
1.75V	193	137	109	92.3	81.1	65.8	56.6	48.4	42.5	38.1	34.7	32	27.8	14.5
1.80V	187	133	106	89.7	78.9	64.1	55.2	47.2	41.5	37.3	34	31.3	27.3	14.2

