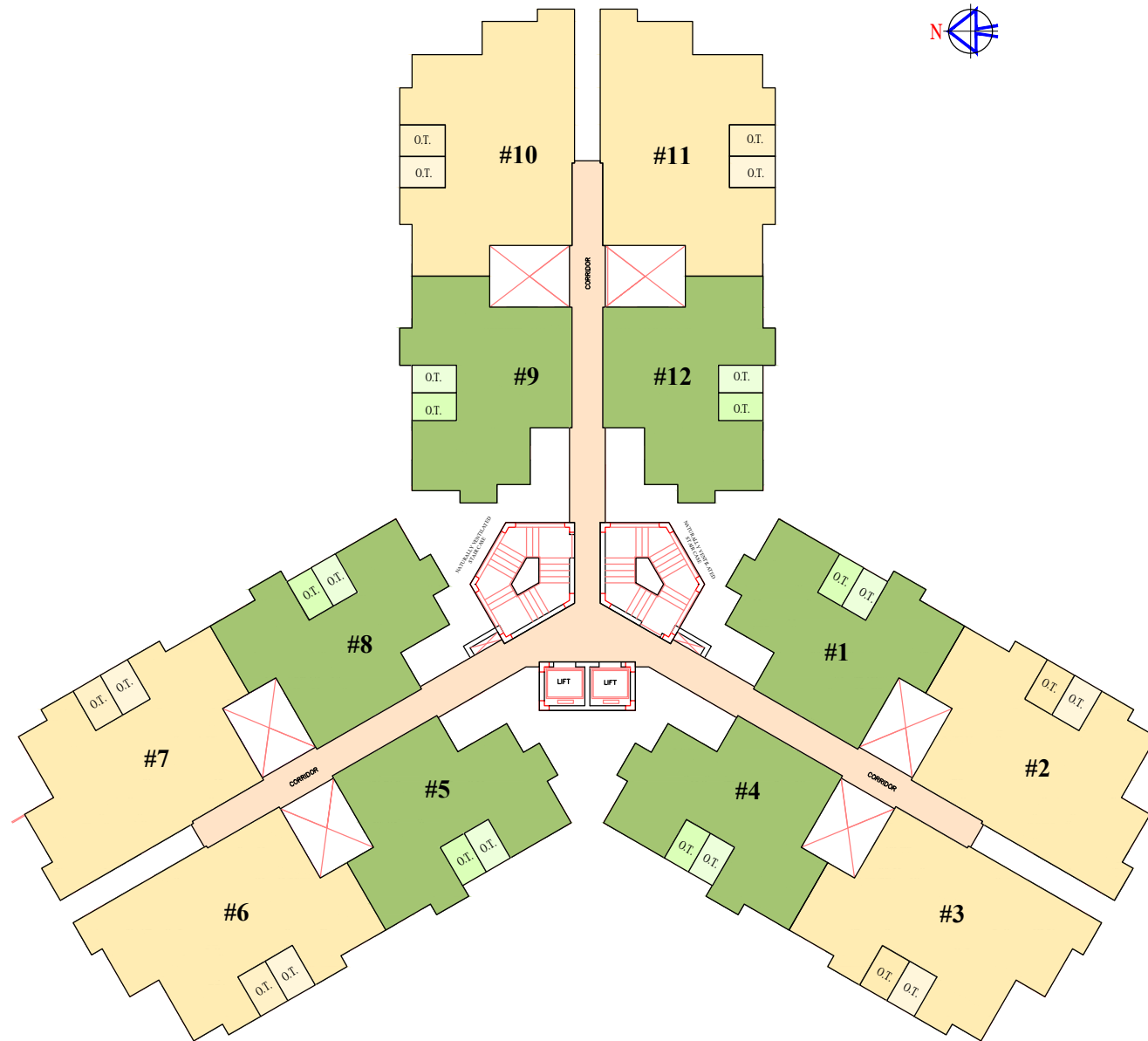


# TOWER PLAN

## TOWER- H

### TYPICAL FLOOR PLAN



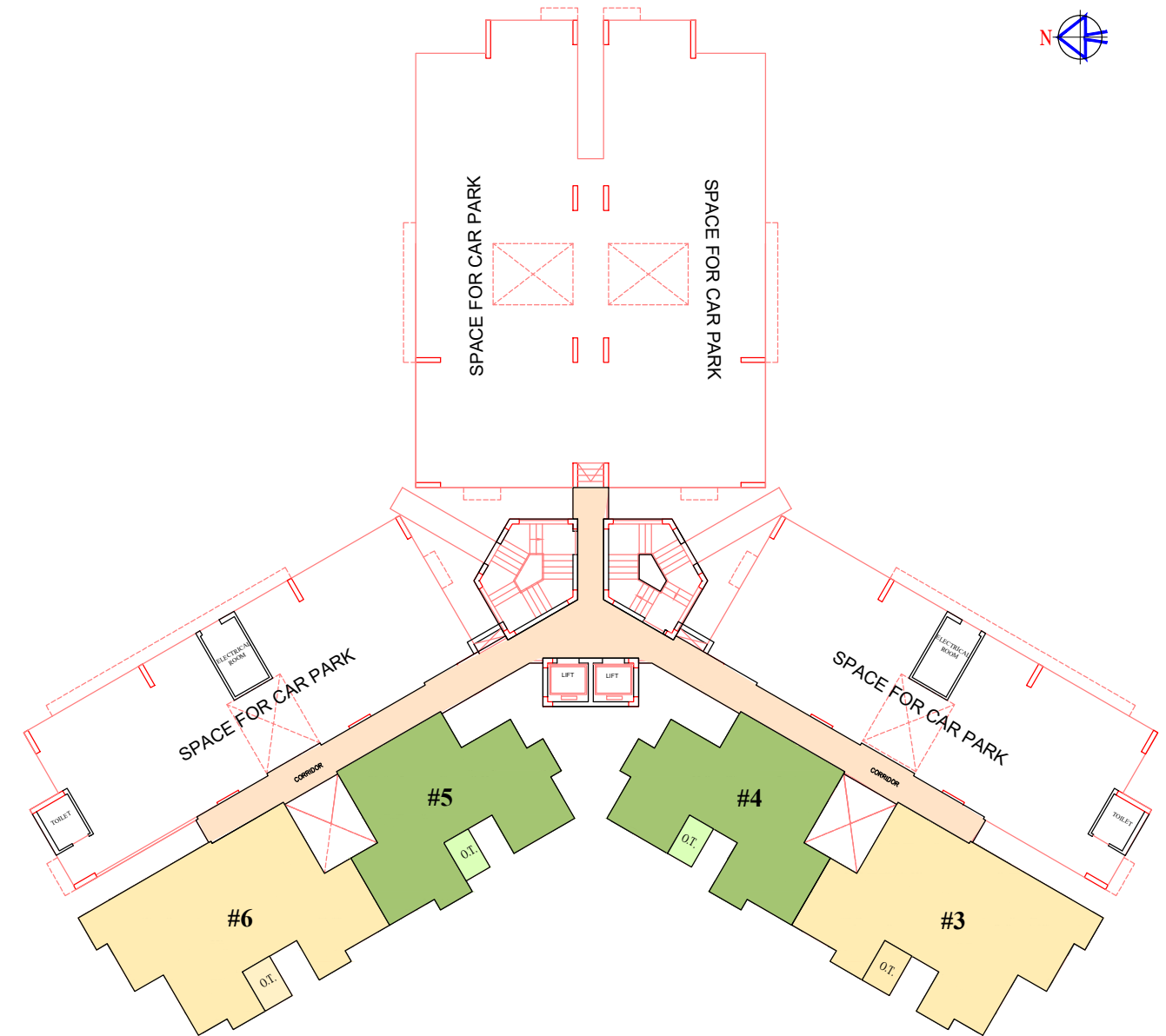
TYPE C 2B 2T  
 TYPE D 3B 2T

O.T. OPEN TERRACE ON 1ST,3RD,5TH,7TH,9TH & 11TH  
  O.T. OPEN TERRACE ON 2ND,4TH,6TH,8TH,10TH & 12TH

# TOWER PLAN

## TOWER- H

### GROUND FLOOR PLAN



TYPE C 2B 2T  
 TYPE D 3B 2T

O.T. OPEN TERRACE ON GROUND FLOOR